

energy update



229 Highway 51 • P.O. Box 715 • Postville, IA 52162-0715
T: (563) 864-7611 • F: (563) 864-7820 • E-mail: acrec@acrec.coop • Website: acrec.coop

MAR | 24

PLAN AHEAD IN 2024

Always Call to the Co-op Before Construction Begins

With the earlier than usual spring weather, it's even more important than normal to plan ahead and call ACEC with any construction plans. Whether a home addition, building a new farm structure, adding a new or update onto a grain drying facility or doing any other project that requires an increase in amperage, it's vital to call ACEC as early in the planning process as possible so we can complete the work in time to accommodate your needs.

Each year, we receive outage calls from members who have added central air, geothermal or even built a newer, larger home, but did not call our office. If the transformer is not large enough to handle the extra load from those projects, it can overload and create an unnecessary and inconvenient outage. Not only is the outage and equipment replacement costly to the Cooperative and the members, it's something that can easily be avoided with a phone call.

"I like to be contacted at the beginning stages of a project so that I'm able to help guide members with decisions for the new service or service changes, allowing me to work hand-in-hand with the electricians on our requirements," said ACEC Staking Engineer Aandi Deering. "Quite often when we are left out of the process until the end, it comes back to them that changes will need to be made causing more cost and delay in the project that all could have been easily prevented with a phone call."

If you have questions about a planned project, want to discuss a possible service upgrade or line extension or want to have someone look over a plan, we encourage you to give us a call at 563-864-7611. By working together, we keep costs down and the power on.



Aandi Deering
Staking Engineer

EVERY 6 MINUTES...

AN UNDERGROUND UTILITY LINE IS DAMAGED

BECAUSE SOMEONE DECIDED TO DIG WITHOUT

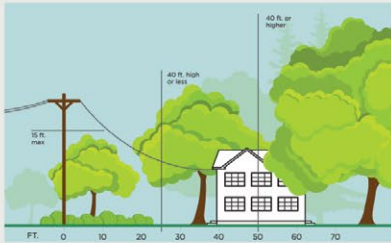
CALLING 811 FIRST

IOWA 811
ONE CALLSM

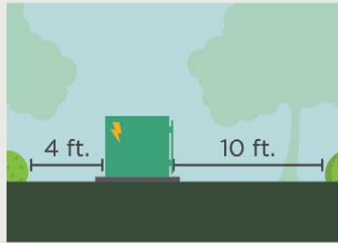
3 Ways to Help Limit Tree Trimming

Did you know electric utilities are required to trim trees and other types of vegetation that grow too close to overhead power lines? We know you love your trees, and we will do everything we can to avoid trimming them. Here's how you can help:

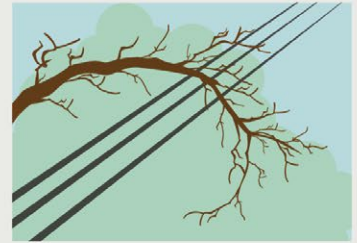
1. Plant trees in the right place. Trees that will be <40 ft. should be planted at least 25 ft. away from power lines (>40ft. should be at least 50 ft. away).



2. Don't block pad-mounted transformers. Plant shrubs at least 10 ft. away from transformer doors and 4 ft. from transformer sides.



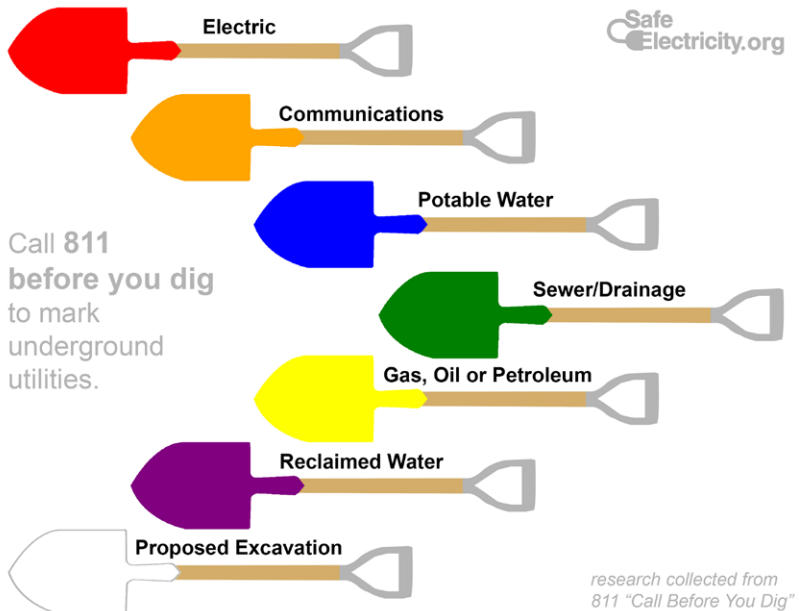
3. Report dangerous branches. If you spot a tree or branch that is dangerously close to power lines, please let us know.



ENERGY EFFICIENCY TIP OF THE MONTH

Lengthen the life of your clothes dryer with regular cleaning. Clean the lint filter after every load, which improves air circulation and safety. Check the lint trap opening and use a vacuum to remove any lint that's fallen inside the opening.

If you use dryer sheets, check the lint filter for residue buildup. Remove any residue with hot water and a nylon brush or toothbrush. Over time, dryer sheets can leave a film on the filter, which can affect the performance of the motor.



NOTICE Complaint Procedures

The following notice is delivered annually to our members in compliance with Complaint Procedures rules as adopted by the Iowa State Utilities Board (IUB).

If you have a complaint concerning your electric service received from Allamakee-Clayton Electric

Cooperative, contact the Co-op at 229 Hwy 51, PO Box 715, Postville, IA 52162, 888-788-1551 or 563-864-7611.

If your complaint is related to Allamakee-Clayton Electric Cooperative service rather than its rates, and Allamakee-Clayton Electric Cooperative does not resolve your complaint, you may request assistance from the Iowa Utilities Board by call 515-725-0069 or by email to customer@iub.iowa.gov.