

energy update



229 Highway 51 • P.O. Box 715 • Postville, IA 52162-0715
T: (563) 864-7611 • F: (563) 864-7820 • E-mail: acrec@acrec.coop • Website: acrec.com

JUN | 22



**Grilled brats and hot dogs,
frozen yogurt, KID ACTIVITIES!**

DUNK OUR Board President & General Manager!

ACEC joins Operation Round Up

SMALL CHANGE Changes Lives! Just round your electric bill up to the nearest dollar. ACEC members who would like to participate in giving back to their community through Operation Round Up may go to the ACEC Website, click on the "Community" page link, and then click on "Operation Round Up." There is a sign-up form to submit. Please share with your friends and family that are ACEC members.



Keep Safe During Summer Storms

No one knows electrical safety better than the experts who practice it every single day. Allamakee-Clayton Electric Cooperative encourages you to practice safety with these reminders for during *and* after a summer storm:

Avoid wires and water — When lightning strikes a home during a storm, the electrical charge can surge through pipes and utility wires. That means you can get zapped if you're touching water or any device that's plugged in, whether it's a landline phone or toaster.

Skip the makeshift shelter — During a storm, it's tempting to take cover under a picnic gazebo or golf cart, but in open-sided structures with no conductors to channel strikes, a bolt's path of least resistance to the ground could be you. On top of that, these structures raise your risk of a lightning strike because of their height. Keep moving toward suitable shelter.

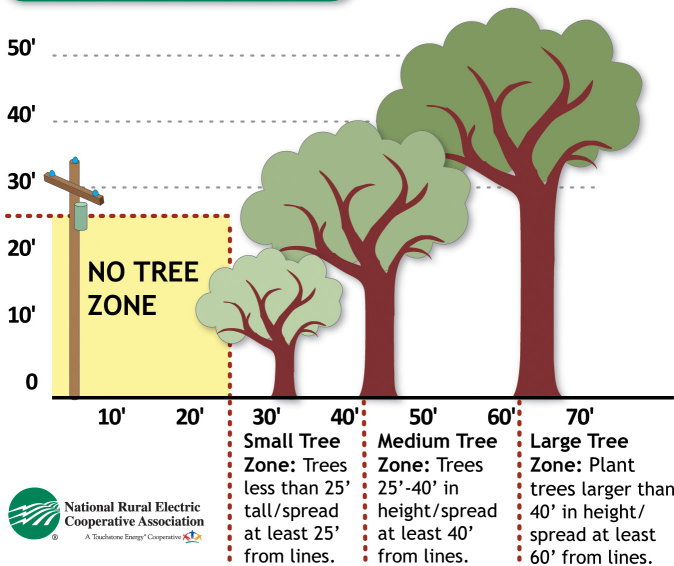
Portable generators — Take special care with portable generators, which can provide a good source of power, but if improperly installed or operated, can become deadly. Do not connect generators directly to household wiring. Power from generators can back-feed along power lines and electrocute anyone coming in contact with them, including lineworkers making repairs. It's best to hire a qualified, licensed electrician to install your generator and ensure that it meets local electrical codes.

Flooded areas — Stay away from downed power lines and avoid walking through flooded areas. Power lines could be submerged and still live with electricity. Report any downed lines to the Cooperative by calling 888-788-1551 immediately.

Electrical equipment — Never use electrical equipment that is wet. Water can damage equipment and parts, posing a shock or fire hazard.

ACEC has been a proud member of Touchstone Energy Cooperatives since 1999. Along with 750 electric cooperatives nationwide, we partner with Touchstone Energy to put safety as our number one concern. For a checklist to assess safety hazards around your home or to take a quick safety quiz, go to togetherwesave.com.

Tree Planting Guide



We clear certain areas in our service territory, known as rights of way, to:

- Keep power lines clear of tree limbs
- Restore power outages more quickly
- Reduce unexpected costs for repairs

Maintaining rights of way improves service reliability for you – our members!